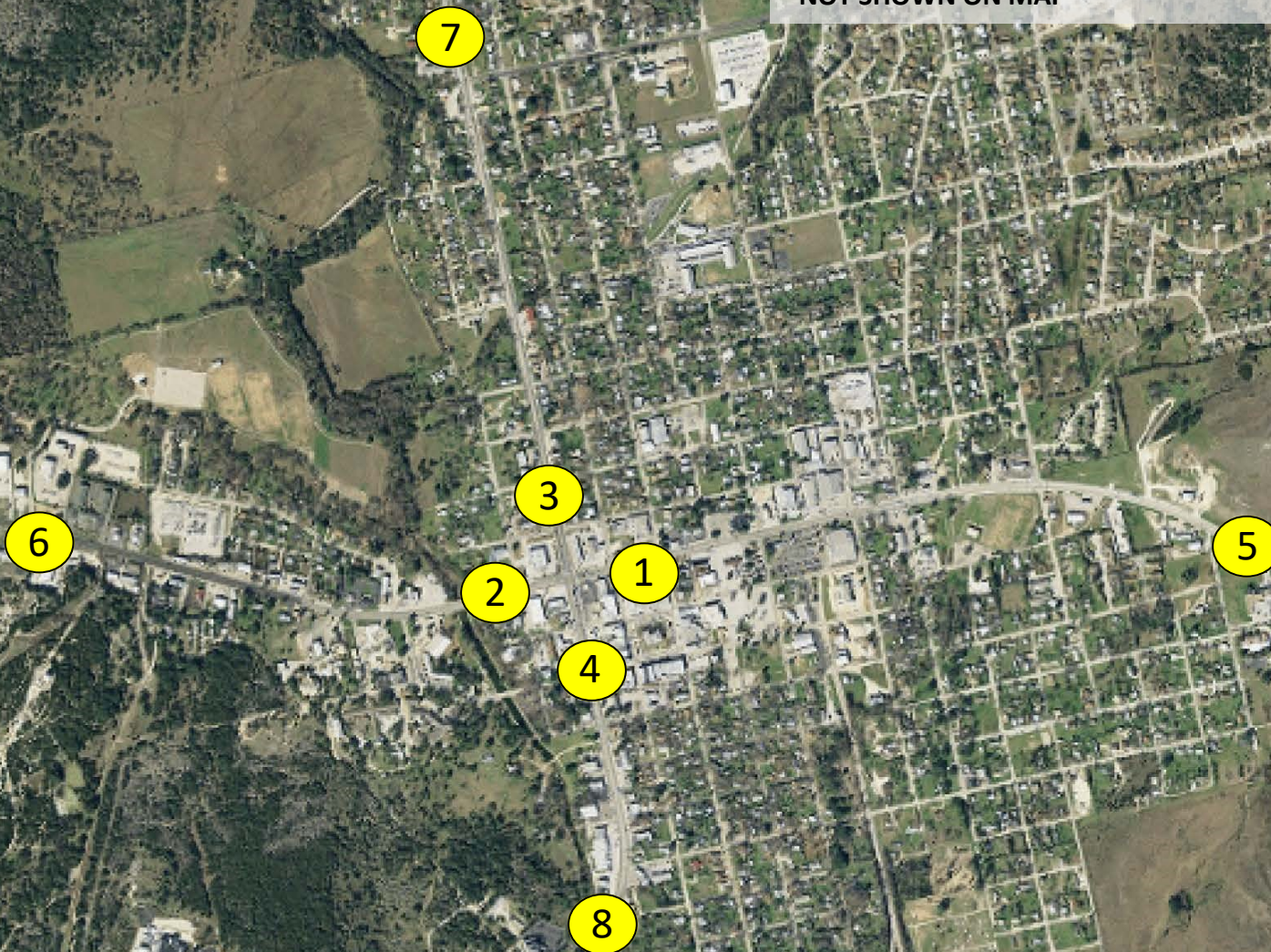


2022 Traffic Counts (AADT)

1. State Hwy 29, east of US 281	20,944
2. State Hwy 29, west of US 281	17,620
3. US 281, north of State Hwy 29	17,797
4. US 281, south of State Hwy 29	24,266
5. State Hwy 29, east of Coke St.	17,958
6. State Hwy 29, west of Post Mountain Rd.	13,387
7. US 281, north of FM 963	13,397
8. US 281, south of Pecan St.	22,422
9. State Hwy 29, west of Hoover Valley Road	9,679*
10. US 281, south of Park Road 4	16,937*

* NOT SHOWN ON MAP



For more information email:
bedc@cityofburnet.com